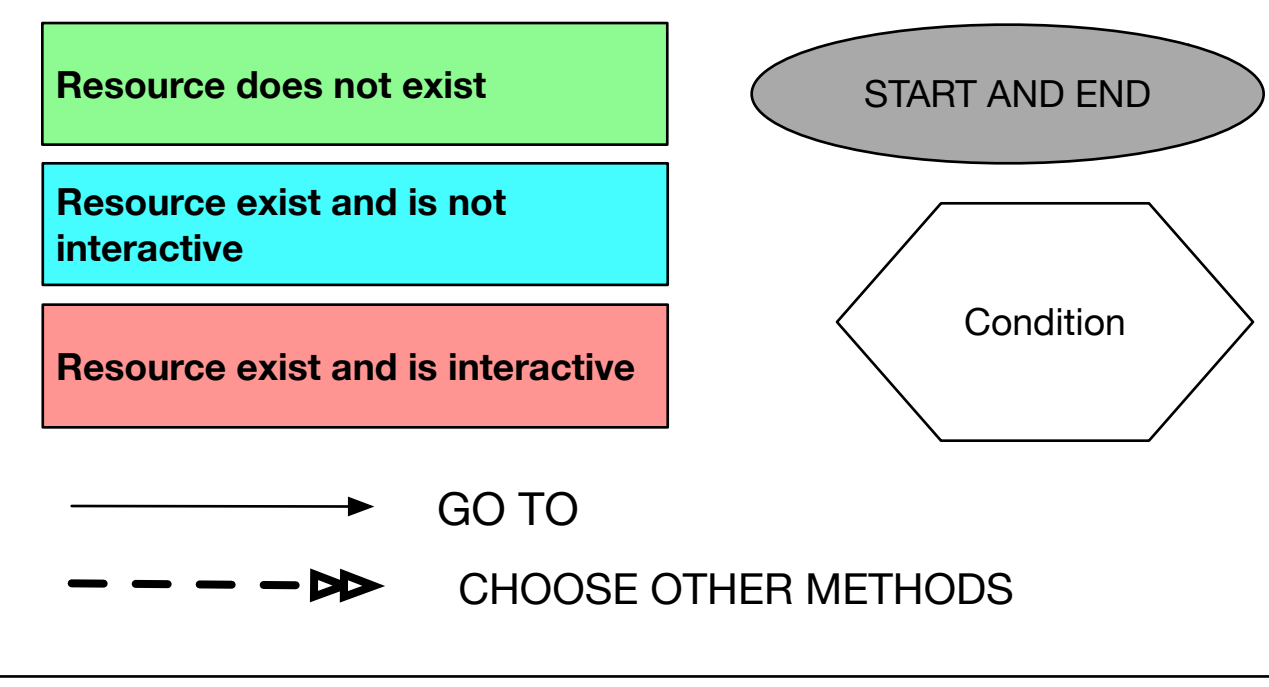


* resource and resource components can be proposed by those involved in the research process. Also, they can be those identified in the literature

** in the In the following flowchart, we will indicate the resource, but it can also be a component of the resource.
 *** or sub activities during a specific activity ou activities during a specific task.



Research and experimental goals are defined. resource and their components*, that researcher needs to design, co-design, test or evaluate are identified too.

